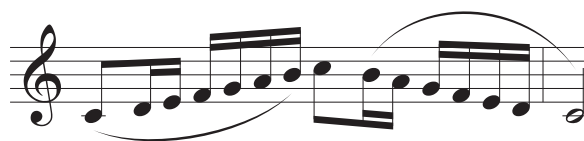


# MBDA Required Junior All State Scales

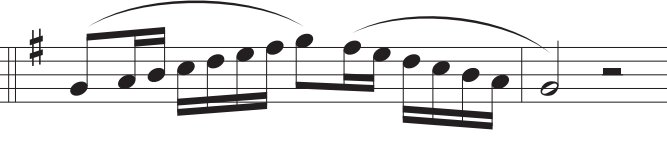
*All scales are to be played evenly and smoothly from memory.*

$\text{♩} = 72$

**C Major Scale [B $\flat$  Concert]**



**G Major Scale [F Concert]**



**D Major Scale [C Concert]**



**A Major Scale [G Concert]**



**E Major Scale [D Concert]**



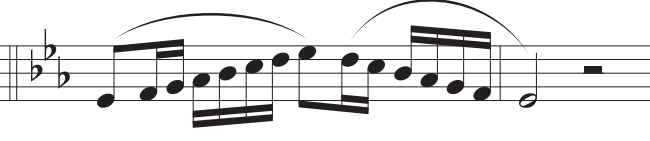
**F Major Scale [E $\flat$  Concert]**



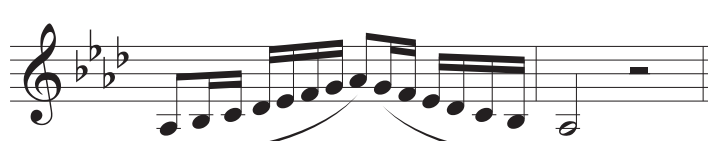
**B $\flat$  Major Scale [A $\flat$  Concert]**



**E $\flat$  Major Scale [D $\flat$  Concert]**



**A $\flat$  Major Scale [G $\flat$  Concert]**



**C Chromatic Scale [B $\flat$  Concert Chromatic]**

